

Thank you for your interest in MechoShade Systems' and requesting a copy of our Architectural Binder Version 604/2.0.

We take pride in presenting this revised and updated version of our binder. As you scan thru the sections you will find many new products and information all presented in a new, easy to read format.

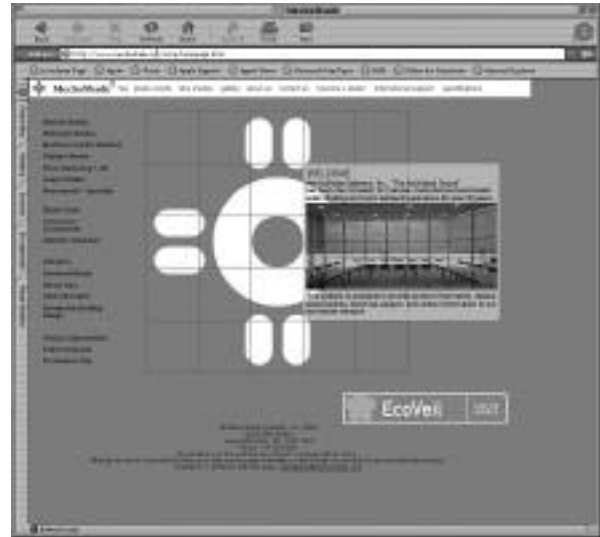
MechoShade Systems' dedication to ecologically sound practices and products is reflected in the production of this binder. Post consumer papers, soy-based inks and special post-consumer cover board and lamination make up this eco-friendly product. Toward that end, we would like to request that you register your copy of the binder at our web site.

**Benefits to registering via the web site:**

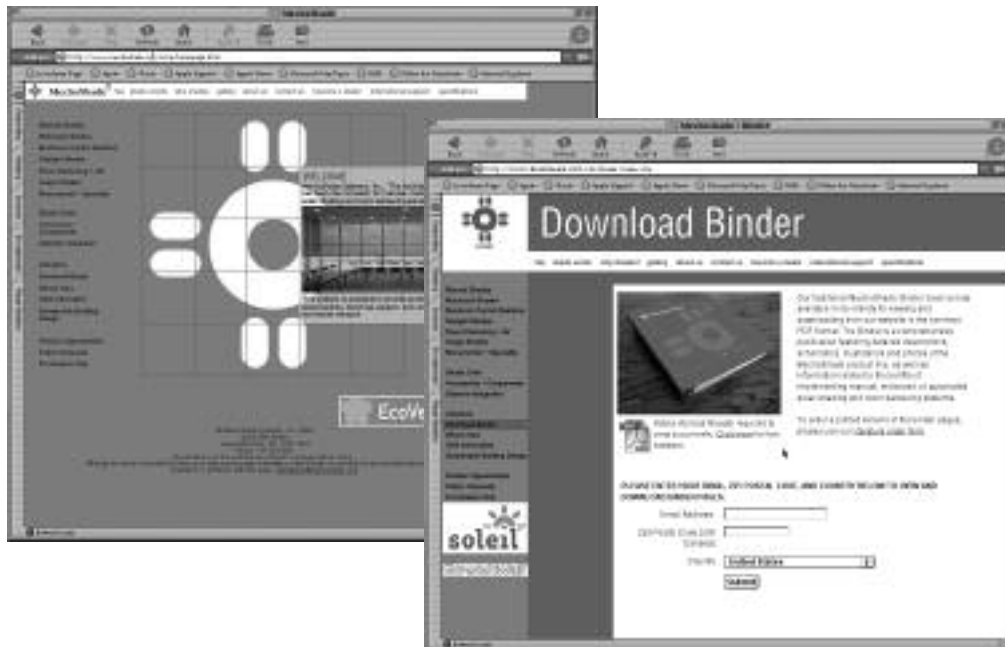
- Immediate total access to product information
- Downloadable and printable specs
- Product updates
- Tech support
- New product announcements

Access the site at [www.mechoshade.com](http://www.mechoshade.com) and click on the "Binder Download" button to get to the registration page.

If you wish to register your copy thru more traditional methods, please see the Fax-Back form on the reverse side.



[www.mechoshade.com](http://www.mechoshade.com)



[www.mechoshade.com](http://www.mechoshade.com)

Alpha / Zip Code: \_\_\_\_\_ / \_\_\_\_\_

Distribution Date: \_\_\_\_\_

Marketing Category Number (See Below):

TERRITORY TYPE	CUSTOMER TYPE	MARKET TYPE	CLIENT TYPE
<input type="text"/>	<input type="text"/>	<input type="text"/>	<input type="text"/>

**TERRITORY TYPE:**

1. NY Metro: CT, NY, NJ, PA
2. New England: NH, MA, ME, VT
3. District of Columbia: DE, MD, VA,
4. East Central: KY, NC, SC, WV
5. SouthEast: AL, GA, MS, TN
6. Florida
7. Central (Lakes Area West):  
WN (South), IL, IN
8. Central (Lakes Area East):  
MI, OH
9. Central (South): AR, LA, TX, OK,
10. Central (North): IA, MN, ND, SD,  
WN (North)
11. Central MidWest: KS, NB, MO,
12. Rocky Mountain: CO, MT, UT, WY
13. SouthWest: CA (South), AZ,  
MX, NV
14. San Francisco Bay Area
15. NorthWest: ID, OR, WA
20. Asia
30. Europe
40. South America
50. Central America
60. Other

**CUSTOMER TYPE**

1. Architect
2. Interior Designer
3. General Contractor
4. Facilities Manager
5. Purchasing Agent
6. Building Owner / Mgr. /  
Developer
7. Energy Manager
8. Engineer
9. Distributor
10. Dealer

**MARKET TYPE:**

- A. Contract / Commercial
- B. Residential (Primarily)
- C. Contract & Residential
- D. Government
- E. Institutional (Hospitals, Schools)
- F. Other

**CLIENT TYPE:**

- A. Specifier
- B. End User
- C. Purchase for Resale
- D. Other

CORPORATE

(Tape Business Card Here)

**Please complete this form and fax to  
MechoShade Systems, Inc.  
so that we can add your name  
to our mailing list.**

**Fax: 718-729-2941  
Email: info@mechoshade.com**

Firm Name: \_\_\_\_\_

Business Type: (Architecture, Interior Designer, etc.) \_\_\_\_\_

Individual: \_\_\_\_\_

E-mail Address: \_\_\_\_\_

Street Address: \_\_\_\_\_

City: \_\_\_\_\_ State: \_\_\_\_ Zip: \_\_\_\_\_

Country: \_\_\_\_\_ Phone: \_\_\_\_\_

Fax: \_\_\_\_\_

Alpha / Zip Code: \_\_\_\_\_ / \_\_\_\_\_

Distribution Date: \_\_\_\_\_

Marketing Category Number (See Below):

TERRITORY TYPE	CUSTOMER TYPE	MARKET TYPE	CLIENT TYPE
<input type="text"/>	<input type="text"/>	<input type="text"/>	<input type="text"/>

**TERRITORY TYPE:**

1. NY Metro: CT, NY, NJ, PA
2. New England: NH, MA, ME, VT
3. District of Columbia: DE, MD, VA,
4. East Central: KY, NC, SC, WV
5. SouthEast: AL, GA, MS, TN
6. Florida
7. Central (Lakes Area West):  
WN (South), IL, IN
8. Central (Lakes Area East):  
MI, OH
9. Central (South): AR, LA, TX, OK,
10. Central (North): IA, MN, ND, SD,  
WN (North)
11. Central MidWest: KS, NB, MO,
12. Rocky Mountain: CO, MT, UT, WY
13. SouthWest: CA (South), AZ,  
MX, NV
14. San Francisco Bay Area
15. NorthWest: ID, OR, WA
20. Asia
30. Europe
40. South America
50. Central America
60. Other

**CUSTOMER TYPE**

1. Architect
2. Interior Designer
3. General Contractor
4. Facilities Manager
5. Purchasing Agent
6. Building Owner / Mgr. /  
Developer
7. Energy Manager
8. Engineer
9. Distributor
10. Dealer

**MARKET TYPE:**

- A. Contract / Commercial
- B. Residential (Primarily)
- C. Contract & Residential
- D. Government
- E. Institutional (Hospitals, Schools)
- F. Other

**CLIENT TYPE:**

- A. Specifier
- B. End User
- C. Purchase for Resale
- D. Other

SALESPERSON

(Tape Business Card Here)

**SALESPERSON  
RETAINS THIS PORTION**

Firm Name: \_\_\_\_\_

Business Type: (Architecture, Interior Designer, etc.) \_\_\_\_\_

Individual: \_\_\_\_\_

E-mail Address: \_\_\_\_\_

Street Address: \_\_\_\_\_

City: \_\_\_\_\_ State: \_\_\_\_ Zip: \_\_\_\_\_

Country: \_\_\_\_\_ Phone: \_\_\_\_\_

Fax: \_\_\_\_\_

# MechoShade Systems

## General Information

Brochures including Sweets Brochure, Analysis of Contemporary Shading Solutions, Corporate Facilities, Health Care, Institutes of Learning, AAC SolarTrac and Ecology and Conservation Mission Statement.

## The MechoShade® System

A manually operated, chain-driven, roller-screen system for interior shading. Features include removable SnapLoc® shade cloth mounting spline and SnapLoc fascia. MechoShades are available in a choice of two drive systems in up to four bracket sizes with accessories. Mecho®/5 Wide which is available in Standard Wide, Pocket and Extended bracket sizes. Plus, DoubleShade™ brackets #10 and 15. Mecho®/3 is available in SlimLine™, Standard Wide, Pocket and Extended bracket sizes.

## The ElectroShade® System

A motorized roller-screen system for interior shading of VIP, high or wide windows. Features include removable SnapLoc® shade cloth mounting spline and SnapLoc fascia. ElectroShades are available in 40mm and 50mm motor systems in multiple bracket sizes. Sizes available are Electro/1, Electro/1 Extended, Electro/2 Extended, Electro/3, Electro/3 Pocket and Electro/3 Extended. Plus, DoubleShade™ brackets #13 and 17.

## Control Systems

Line voltage and low voltage switches plus low voltage controls for ElectroShades. Exclusive ElectroShade Controls allow for low voltage interface with A/V and BMS control systems. ElectroShade Controls feature local, group and master control. Various systems are capable of providing mid-window alignment as well as user specified intermediate stop points at the push of a button. The AAC SolarTrac™ system provides ultimate computerized window management for Sustainable Design and maximum energy efficiency by optimizing daylighting and solar control.

## ThermoVeil® and EuroVeil® Shade cloths

Solar shade cloths woven exclusively to MechoShade's quality and performance specifications. Available in a variety of densities, colors and weaves, with specific guidelines on selection based on glass and orientation. Data regarding shading coefficient, visible light and UV transmission for clear, blue-green and bronze glazing (Single, Double and Double Low E).

## Pockets and Accessories

MechoShade has developed a full line of pockets and accessories. Pockets range from fully extruded pockets with removable closures, to bent metal pockets for large openings and double shade systems, to full line of closures, that can be installed into wood or sheet rock pockets and soffits created by the contractor. Custom pocket sizes are also available. Detail drawings of pockets and accessories.

## Room Darkening and Audio Visual

Side and sill channels used with MechoShade and ElectroShade systems with blackout shade cloth for areas requiring a room darkening system such as an A/V or theater requirement. For 100% Blackout, (i.e) for developing photography) please contact MechoShade for special details and requirements.

## Specialty Shades

Fixed shades in a frame or hung loose from the ceiling. Two-layer DualShades® (sunscreen & insulating film or sunscreen & blackout) with an increased ability to reduce heat gain and reduce heat loss while providing personal comfort. ImageShades® with custom inkjet images for retail or corporate identity applications.

## Tensioned and Non-Tensioned SkyLighter Shades™

Special solutions for shading of monumental, curved, sloped, and horizontal fenestration. Automatic and manual operations. Flat, soft-fold, accordion-pleated, top-down, and bottom-up configurations.

## Manufacturing Standards, Edge Clearances and Weights & Measures

Independent laboratory FR and toxicity test results. Also data for determining edge clearances, shade weight, tube and motor sizes, roll diameters and tube spans for proper hardware selection, plus Warranty and Terms and Conditions of Sale.

# MechoShade® Ecology and Conservation Mission Statement

MechoShade's corporate logo, a stylized symbol representing the sun, was adapted from Native Americans who historically live in harmony with their natural environment. It symbolizes the over 30 years MechoShade has been assisting architects and designers create environmentally friendly design that is more in harmony with the natural environment by allowing greater use of the dynamic properties of glass, natural light and solar energy, resulting in a more human and ecology safe environment. MechoShade adheres to this policy by:

## 1) Designing and Producing Energy Conserving Products

MechoShade actively promotes energy conservation in the workplace through the use of our passive, manual and automated solar shading systems. ThermoVeil® and EuroVeil® EuroTwill® and Equinox™ ShadeCloths, in recommended densities, provide a significant reduction in solar heat gain and greater comfort from the radiant component of sunshine. The resulting reduction in solar energy and improved personal protection lowers fossil fuel consumption used by HVAC and improves worker productivity. Thus you feel cooler with less air conditioning and save energy while maintaining those important outdoor views, so beneficial to personal well being.

We are now introducing our revolutionary new shade cloth, EcoVeil™. Inspired by William McDonough and Michael Braungart's book on "Cradle to Cradle" design, EcoVeil is better than PVC free and is designed to be what MBDC calls a "technical nutrient"; all inputs are being evaluated for their impact on human and environmental health.

Our electronic control systems and computerized solar tracking systems can be integrated into smart building management systems to maximize the shade benefits and features.

## 2) Independently Tested and Approved ShadeCloths

ThermoVeil's and EuroVeil have been proven in testing (ASTM G-21-96: Anti Fungal) as anti-bacterial; they do not



support the micro-organisms such as staph, fungus and mildew that may contribute to health concerns. This Anti Fungal property makes them appropriate for hospitals and health-care facilities. Additionally, ThermoVeil and EuroVeil have passed the New York State Toxicity Test (Pittsburgh Protocol), and found to be less toxic than burning wood. A complete listing

along with documentation may be found in Section 10, Manufacturing Standards, of this Binder.

## 3) Recyclable

We actively promote the use of recyclable materials wherever possible. For example:

- Our aluminum extrusions, such as tubes and hembars, have a 50% recycle content and are 100% recyclable material.
- Our steel components are manufactured with virgin material, but are 100% recyclable.
- EcoVeil can be reclaimed and recycled into new, first quality fabric rather than "downcycled into a lesser quality product."
- MechoShade warrants ThermoVeil ShadeCloths for Lifetime or 25 years, depending on the system, however many of our customers have experienced over twenty-five years of dependable service. This longevity means ThermoVeil, EuroVeil, EuroTwill, Equinox and Faux Naturals ShadeCloths will not be filling up landfills to the extent of other office products such as carpeting, draperies, computers.

## 4) Longevity

Competing systems require substantial maintenance and replacement shades not attributable to the MechoShade roller screen system. MechoShade 5, with a Limited Lifetime Warranty on all components except the bead chain, substantially minimizes or eliminates disposal and recyclable issues.

MechoShade Systems, Inc.  
42-03 35th Street, Long Island City, NY 11101  
Telephone: 718-729-2020  
Fax: 718-729-2941 / 800-899-8081

E-mail: [info@mechoshade.com](mailto:info@mechoshade.com)  
Internet Web Site: <http://www.mechoshade.com>

1.01  
MS2200 - 01/01/08



## Thank you for considering MechoShade Systems' products.

As the original architectural roller screen system, we have 30 years experience providing a variety of manual, motorized, and automated solar shading and room darkening systems. The original MechoShade design won the prestigious ROSCOE award 1972 for Creative Design of Window Shading Systems. Our 3000 Series and Faux Naturals fabrics have won Nightingale Awards.

MechoShade Systems, Inc. exclusively designs its own hardware, shade cloths and electronic control systems. We hold a number of patents on our shade systems. As such, MechoShade is able to provide superior quality, single source integrated shade systems specifically designed for various applications. Only MechoShade provides key data and recommendations on matching shade cloths to specific types of glass in different applications.

MechoShade® and ElectroShade® systems are fully accessorized to accommodate a large variety of installation details in a manner consistent with current architectural detail requirements. Our sales representatives can access our engineering to provide pre-construction services and proposed installation details.

MechoShade's collection of shade cloths, including ThermoVeil®, EuroVeil®, EuroTwill®, Equinox™ and Faux Naturals™ are woven exclusively for MechoShade in accordance with our quality and performance specifications. We have the broadest variety of shade cloth selections in terms of color, texture and openness. MechoShade is proud to be the first manufacturer to offer a line of SuperWide™ shade cloth at 126" in width. MechoShade also features the ability to design custom weaves and colors. The minimum run for custom colors and weave depend on the final construction and ranges from 250 linear yards to 2,000 linear yards depending upon formal design.

With the introduction of EcoVeil™ our sustainable, PVC free shadecloth, MechoShade Systems continues to display it's role as the industry leader with sustainable, "Cradle to Cradle" products and technology.

MechoShade Systems has implemented a QuickShipShade™ program. Our products are available worldwide through installing dealers and/or fabricators. In the United States, we have architectural sales representatives in most major cities.

MechoShade Systems prides itself in it's role as the leader in an ever changing, progressive industry. As such, we are constantly developing and improving our products and services. The binder that you now hold is constantly being updated and modified.

**For the latest updates and new product information, please visit our web site at [www.mechoshade.com](http://www.mechoshade.com) or call us at 718-729-2020 to find your nearest representative or dealer for more product information.**



[www.mechoshade.com](http://www.mechoshade.com)